



3 WILDWOOD TERRACE, WINCHESTER



EXCEPTIONAL SERVICE.  
ELEVATED EXPERIENCES.  
EFFECTIVE COMMUNICATION.  
EVERLASTING RELATIONSHIPS.

SVEN ANDERSEN

781.729.2329

[sven@andersengrouprealty.com](mailto:sven@andersengrouprealty.com)

[andersengrouprealty.com](http://andersengrouprealty.com)

17 Waterfield Road  
Winchester, MA 01890





# 3 WILDWOOD TERRACE WINCHESTER, MA

BEDROOMS: 3  
BATHROOMS: 1 Full Bath, 1 Half Bath  
LIVING SPACE: 1,886 SQ. FT.  
ELEMENTARY: Ambrose  
MIDDLE SCHOOL: McCall  
HIGH SCHOOL: Winchester High

Welcome home to this elegant, modern Colonial on a quiet cul-de-sac! Conveniently located to the heart of Winchester Center, Packer-Ellis Tennis Courts & Wedge pond, perfect for all seasons outdoor activities. On the main level, you'll find an updated, open concept kitchen with quartz countertops and stainless steel appliances including dual end WOLF range stove, large kitchen island and opens to a formal dining area with exterior access. You'll be drawn in by the perfect entertaining outdoor deck, with a large, spacious, easy-to-maintain fenced-in backyard and outdoor shed for extra storage! Half bath and open living room with custom build-ins complete this level. Upper level you'll find a spacious master bedroom with a walk-in closet, 2 additional bedrooms and a full bathroom. The finished basement features separate heating and cooling, laundry hook-up, copious storage space, and offers the perfect home gym, office, or playroom! Truly a must see!



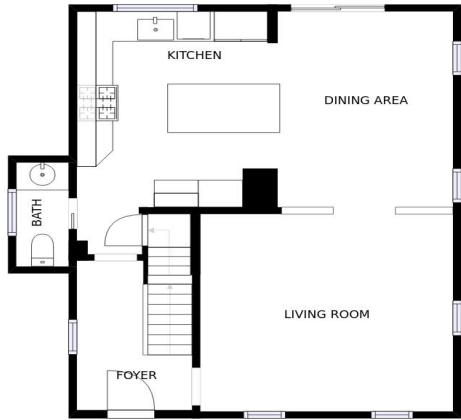
GROSS INTERNAL AREA  
FLOOR 1: 558 sq. ft, FLOOR 2: 666 sq. ft  
FLOOR 3: 662 sq. ft  
TOTAL: 1886 sq. ft  
SIZES AND DIMENSIONS ARE APPROXIMATE, ACTUAL MAY VARY.



FLOOR 3



FLOOR 1



FLOOR 2