

**MLS # 73407336 - Active**  
**Single Family - Detached**



**315 Waverley St**  
**Belmont, MA 02478-2418**  
**Middlesex County**

Style: **Colonial**  
Color: **Gray**  
Grade School: **Wellington**  
Middle School: **Chenery**  
High School: **Belmont**  
Approx. Acres: **0.29 (12,668 SqFt)**  
Handicap Access/Features:  
Directions: **Common St. to Waverley St.**

List Price: **\$2,424,000**

Total Rooms: **14**  
Bedrooms: **5**  
Bathrooms: **4f 1h**  
Main Bath:  
Fireplaces: **0**  
Approx. Street Frontage:

**Warm and inviting, this newly renovated five-bedroom home is ideally located in desirable Belmont, MA just 6.4 miles from Boston and nestled beside Clark Hill. It offers the perfect blend of style, comfort, and convenience. Enjoy walking distance to Belmont Center, top-rated schools, the commuter rail, and local parks. Inside, high ceilings and abundant natural light create a bright, open atmosphere. The finished walk-out basement opens to a professionally landscaped backyard with a brand-new paver patio. Thoughtful design and quality finishes are found throughout, including a gourmet kitchen with Thermador appliances. The spacious primary suite features a walk-in closet and a private bath. A rare opportunity to own a move-in-ready home in one of Belmont's most sought-after neighborhoods.**

**Property Information**

Approx. Living Area Total: **3,743 SqFt**

Living Area Includes Below-Grade SqFt: **No**

Living Area Source: **Measured**

Approx. Above Grade: **3,743 SqFt**

Approx. Below Grade:

Living Area Disclosures: **SQFT calculations are approximate and for marketing use only**

Heat Zones: **4 Central Heat, Heat Pump**

Cool Zones: **4 Central Air, Heat Pump**

Parking Spaces: **4 Off-Street, Paved Driveway**

Garage Spaces: **2 Attached**

Disclosures: **The 5th bedroom on the 3rd floor has a closet in the hallway.**

**Room Levels, Dimensions and Features**

Room	Level	Size	Features
Living Room:	1		Main Level, Open Floor Plan, Recessed Lighting
Dining Room:	1		Flooring - Hardwood, Balcony / Deck, Main Level, Open Floor Plan, Recessed Lighting
Kitchen:	1		Flooring - Hardwood, Dining Area, Countertops - Stone/Granite/Solid, Main Level, Kitchen Island, Recessed Lighting, Stainless Steel Appliances, Gas Stove, Lighting - Pendant, Lighting - Overhead
Main Bedroom:	2		Bathroom - Full, Bathroom - Double Vanity/Sink, Closet - Walk-in, Flooring - Hardwood, Recessed Lighting
Bedroom 2:	2		Closet, Flooring - Hardwood, Recessed Lighting
Bedroom 3:	2		Closet, Flooring - Hardwood, Recessed Lighting
Bedroom 4:	2		Closet, Flooring - Hardwood, Recessed Lighting
Bedroom 5:			Flooring - Hardwood, Recessed Lighting
Bath 1:	1		Bathroom - Half, Flooring - Stone/Ceramic Tile, Main Level, Lighting - Pendant
Bath 2:	2		Bathroom - Full, Bathroom - Tiled With Tub & Shower, Flooring - Stone/Ceramic Tile, Recessed Lighting, Lighting - Pendant
Bath 3:	2		Bathroom - Half, Bathroom - Double Vanity/Sink, Bathroom - Tiled With Tub & Shower, Flooring - Stone/Ceramic Tile, Recessed Lighting, Lighting - Sconce
Bathroom:	3		Bathroom - Full, Bathroom - Tiled With Shower Stall, Skylight, Flooring - Stone/Ceramic Tile, Recessed Lighting, Lighting - Pendant
Bathroom:	B		Bathroom - Full, Bathroom - Tiled With Shower Stall, Flooring - Stone/Ceramic Tile, Recessed Lighting
Other:	B		Closet, Flooring - Laminate, Recessed Lighting

**Features**

Appliances: **Range, Dishwasher, Disposal, Refrigerator**

Area Amenities: **Public Transportation, Shopping, Swimming Pool, Tennis Court, Park, Laundromat, Bike Path, Highway Access, House of Worship, Public School, T-Station**

Basement: **Yes Full**

Beach: **No**

Construction: **Frame**

Electric: **200 Amps**

Energy Features: **Insulated Windows, Insulated Doors**

Exterior: **Stucco, Composite**

Exterior Features: **Porch, Deck, Deck - Composite, Balcony, Professional Landscaping**

Flooring: **Wood, Tile, Laminate**

Foundation Size:

Foundation Description: **Poured Concrete, Fieldstone**

Hot Water: **Electric, Tank**

Insulation: **Full, Spray Foam**

Interior Features: **Cable Available, Walk-up Attic, Internet Available - Broadband**

Lot Description: **Paved Drive**

Road Type: **Public**

Roof Material: **Asphalt/Fiberglass Shingles**

Sewer Utilities: **City/Town Sewer**

Utility Connections: **for Gas Range, for Gas Oven, for Electric Dryer, Washer Hookup, Icemaker Connection**

Water Utilities: **City/Town Water**

Waterfront: **No**

Water View: **No**

**Other Property Info**

Disclosure Declaration: **No**

Exclusions:

Home Own Assn: **No**

Lead Paint: **Unknown**

UFFI: Warranty Features:

Year Built: **2025** Source: **Owner**

Year Built Description: **Renovated Since**

Year Round:

Short Sale w/Lndr. App. Req: **No**

Lender Owned: **No**

**Tax Information**

Pin #: **M:25 P:000032 S:**

Assessed: **\$0**

Tax: **\$16,481** Tax Year: **2025**

Book: **82205** Page: **228**

Cert: **000000000129887**

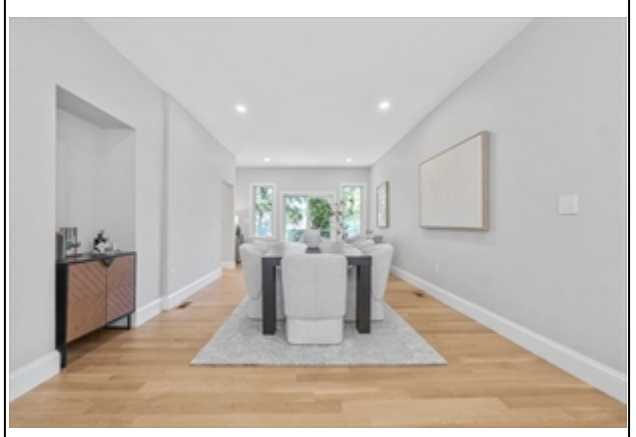
Zoning Code: **SC**

Map: Block: Lot:

The information in this listing was gathered from third-party sources including the seller and public records. MLS Property Information Network, Inc., and its subscribers disclaim any and all representations or warranties as to the accuracy of this information. Content ©2025 MLS Property Information Network, Inc.

MLS # 73407336 - Active  
315 Waverley St, Belmont, MA 02478-2418

Single Family - Detached  
List Price: \$2,424,000



The information in this listing was gathered from third-party sources including the seller and public records. MLS Property Information Network, Inc., and its subscribers disclaim any and all representations or warranties as to the accuracy of this information. Content ©2025 MLS Property Information Network, Inc.

MLS # 73407336 - Active  
315 Waverley St, Belmont, MA 02478-2418

Single Family - Detached  
List Price: \$2,424,000



The information in this listing was gathered from third-party sources including the seller and public records. MLS Property Information Network, Inc., and its subscribers disclaim any and all representations or warranties as to the accuracy of this information. Content ©2025 MLS Property Information Network, Inc.



MLS # 73407336 - Active  
315 Waverley St, Belmont, MA 02478-2418

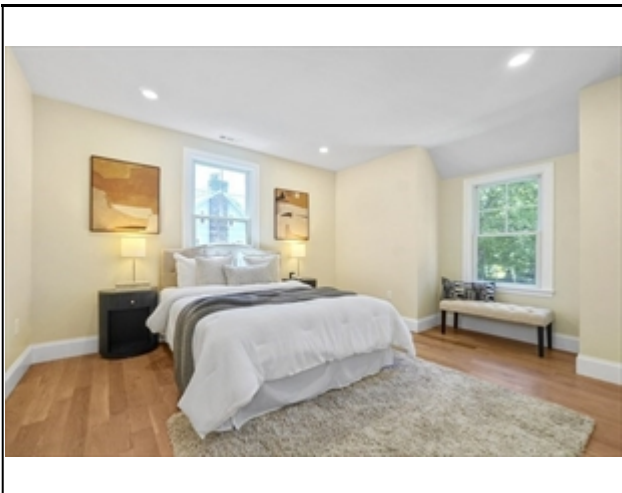
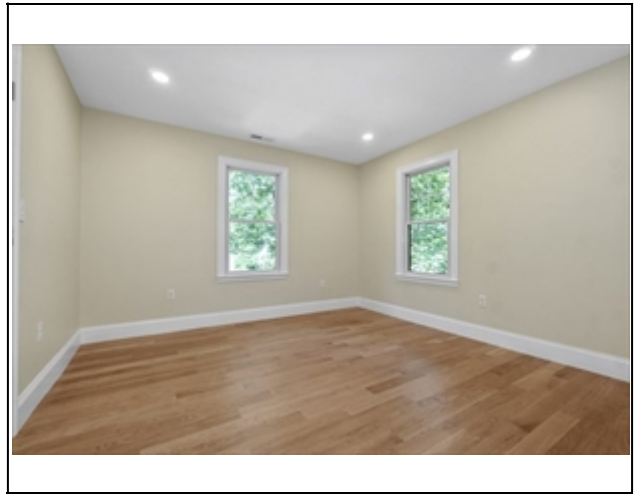
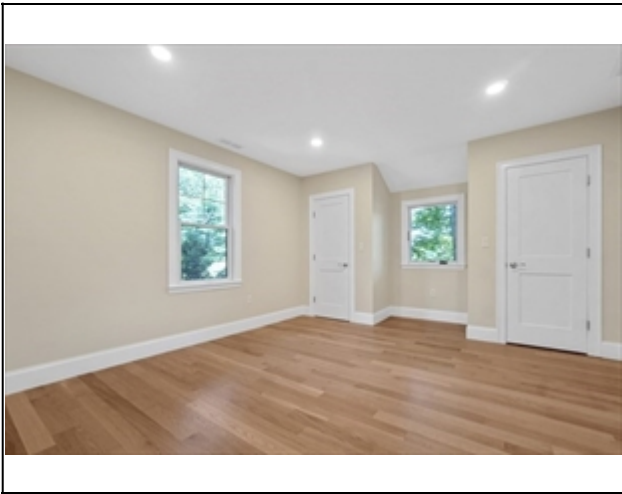
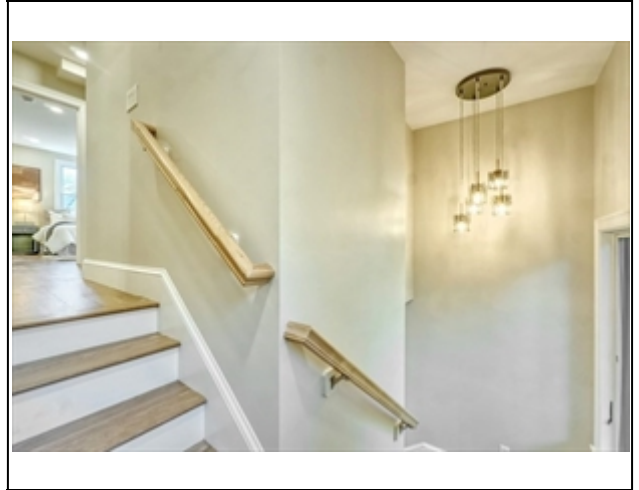
Single Family - Detached  
List Price: \$2,424,000



The information in this listing was gathered from third-party sources including the seller and public records. MLS Property Information Network, Inc., and its subscribers disclaim any and all representations or warranties as to the accuracy of this information. Content ©2025 MLS Property Information Network, Inc.

MLS # 73407336 - Active  
315 Waverley St, Belmont, MA 02478-2418

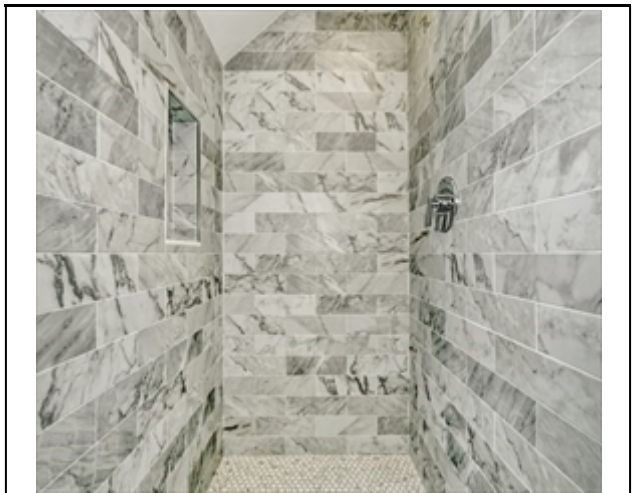
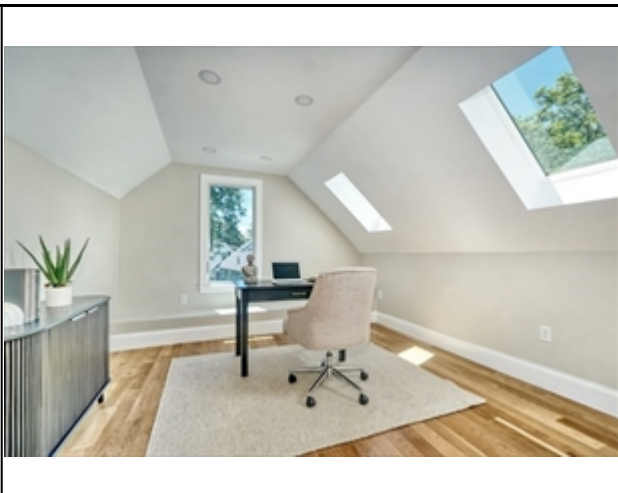
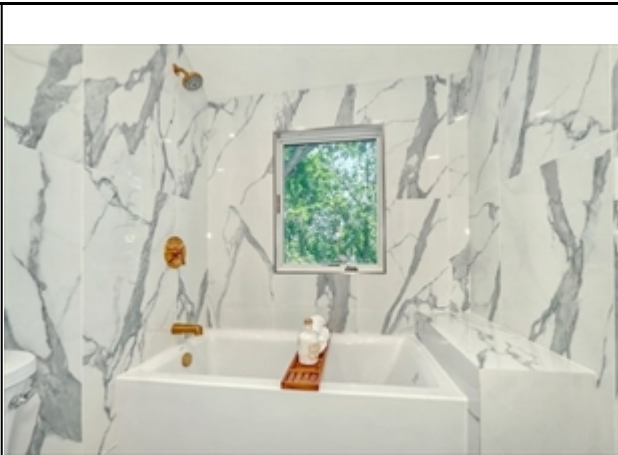
Single Family - Detached  
List Price: \$2,424,000



The information in this listing was gathered from third-party sources including the seller and public records. MLS Property Information Network, Inc., and its subscribers disclaim any and all representations or warranties as to the accuracy of this information. Content ©2025 MLS Property Information Network, Inc.

MLS # 73407336 - Active  
315 Waverley St, Belmont, MA 02478-2418

Single Family - Detached  
List Price: \$2,424,000

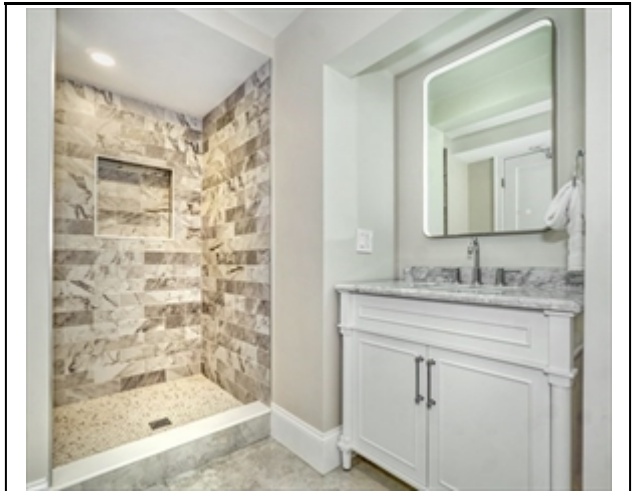


The information in this listing was gathered from third-party sources including the seller and public records. MLS Property Information Network, Inc., and its subscribers disclaim any and all representations or warranties as to the accuracy of this information. Content ©2025 MLS Property Information Network, Inc.



MLS # 73407336 - Active  
315 Waverley St, Belmont, MA 02478-2418

Single Family - Detached  
List Price: \$2,424,000



The information in this listing was gathered from third-party sources including the seller and public records. MLS Property Information Network, Inc., and its subscribers disclaim any and all representations or warranties as to the accuracy of this information. Content ©2025 MLS Property Information Network, Inc.

MLS # 73407336 - Active  
315 Waverley St, Belmont, MA 02478-2418

Single Family - Detached  
List Price: \$2,424,000



The information in this listing was gathered from third-party sources including the seller and public records. MLS Property Information Network, Inc., and its subscribers disclaim any and all representations or warranties as to the accuracy of this information. Content ©2025 MLS Property Information Network, Inc.